



Subcortical Visual Pathway and Topological Perception*

YU Zhao-Qian^{1,2)}, ZHAO Xu-Dong³⁾, YANG Li-Chuan²⁾, MENG Qian-Li^{3,4)**}, QI Ren-Li^{1)**}

¹⁾First Affiliated Hospital of Kunming Medical University, Kunming 650032, China;

²⁾Graduate School, Kunming Medical University, Kunming 650500, China;

³⁾State Key Laboratory of Brain and Cognitive Science, Institute of Biophysics, Chinese Academy of Sciences, Beijing 100101, China;

⁴⁾Department of Psychological and Brain Sciences, University of Delaware, Delaware 19701, USA)

Abstract Research has shown that in addition to the classical visual cortical pathway, there is an “ancient”, rapid subcortical pathway responsible for the rapid processing of emotion-related information both consciously and unconsciously. This pathway consists of the superior colliculus, pulvinar, and amygdala and bypasses the primary visual cortex. Our study shows that this pathway is also responsible for processing visual topological information, and that the visual cortex is not related to topological information processing. Based on these findings, we believe that in early stage of vision, the brain detects signals involving life or safety, putting the brain into an alert state, which is essential for the survival of the species. Therefore, in the early stage of vision, the objects to be detected are only “appearing” and “disappearing”, not “texture”, “shape”, *etc.* Both “appearance” and “disappearance” are changes in topological features. The presence of topological perception and subcortical pathways may be the neural basis for early warning. In primates, the peripheral area of retina is distributed mainly with rod cells, the visual information processing in this area is mainly processed by subcortical visual pathway, this type of retinal structure appeared in more than one hundred million years ago. The area close to the center of the retina is the fovea, the visual information processing in this area is mainly processed by visual cortex, cone cell density increased greatly, the visual spatial resolution becomes very high. This structure emerged only 50 million years ago, so our eyes span at least 50 million years from the peripheral region to the central region. It is a Mosaic of an older structure and a younger one, and their coexistence gives us perfect vision. When we consider the significance of the existence of subcortical visual pathway, we should also consider the function of cortical pathways.

Key words subcortical visual pathway, topological perception, visual information processing, cortex, evolution

DOI: 10.16476/j.pibb.2022.0123

In primates, cortical processing of visual information is the dominant mode of visual information processing. The first step in cortical visual information processing occurs in the occipital lobe, which receives input from the ipsilateral lateral geniculus of thalamus. The dominant view is that visual information from the thalamus must first pass through the primary visual cortex and then be processed further in the other areas of brain. However, some studies have found that some visual information in the brain does not necessarily come from the primary visual cortex. To illustrate this, let us start with the following experiment.

1 Subcortical pathways and unconsciously visual information processing

In some patients, part of the primary visual cortex has lost its function due to stroke and other

* This work was supported by grants from Science Foundation of Yunnan Province (202105AC160029, KYRLMY20200026, 202002AA100204).

** Corresponding author.

QI Ren-Li. Tel: 86-15969569740, E-mail: qiqi947@mail.ustc.edu.cn

MENG Qian-Li. Tel: 86-13022685238, E-mail: qlmeng@udel.edu

Received: March 30, 2022 Accepted: September 20, 2022

causes. They reported that they could not see external objects, but if they were allowed to walk freely and then some obstacles were placed in front of them, even though the subjects claimed that they could not see anything, they would unconsciously avoid the obstacles. This showed that visual information entering outside the primary visual cortex could still be processed in the brain and could still guide subject's behavior, even if he could not perceive it^[1]. How is this information processed in the brain?

Recent studies have shown that in addition to classical cortical visual pathways, there are also several so-called subcortical pathways in the brain. One of which starts in the retina, and the information is transmitted from the retina to the superior colliculus of the midbrain and then through the pulvinar to the amygdala^[1-6] (Figure 1).

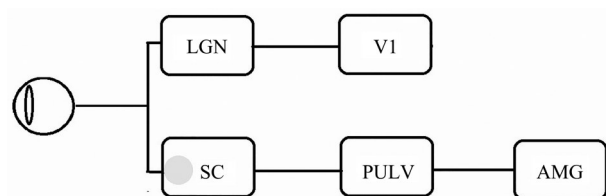


Fig. 1 Subcortical visual pathway linking the superior colliculus (SC), the pulvinar (PULV), and the amygdala (AMG)^[7]

LGN: lateral geniculate nucleus; V1: primary visual cortex.

The superior colliculus is an ancient structure located in the midbrain, which is the first nucleus of visual information processing behind the retina. Classical theory of vision believes that superior colliculus is related to oculomotor control, but in recent years, it has been found that the function of this pathway is much more than that. The superior colliculus receives information directly from the retina and is activated primarily by low spatial frequency and emotion-related visual stimuli, particularly sensitive to unconscious emotional visual stimuli^[2, 8-11].

In recent years, with the development of new neurobiological technologies, such as brain imaging and photogenetics, we have gained a better understanding of the neural circuits and functions of the superior colliculus^[12-17]. In rodents, the superior colliculus, like the amygdala, is associated with fear emotion^[18].

The pulvinar nucleus is the second nucleus of visual information processing in this pathway. The pulvinar is involved in the regulation of attention^[2, 19-21]. When the pulvinar is impaired, the attention capture, induced by emotional visual stimuli on consciousness will be affected. Compared with the superior colliculus, the neural circuit of pulvinar is relatively complex, and it has complex fiber connections with some nuclei of thalamus and cerebral cortex. In humans, with the development of brain imaging technology, more detailed understanding of the anatomy and function of this structure has been achieved^[22-28].

The amygdala is the last stage of this pathway and the most widely studied brain structure in this pathway. These studies of amygdala have been mainly focused on following fields: (1) the phylogeny^[29-32] and ontogeny of amygdala^[33-35]; (2) anatomical and functional connectivity of amygdala with limbic system and prefrontal lobe^[36-38]; (3) the functional relationship of amygdala and emotional regulation with some mental disorders, such as autism^[39-40]; (4) the neural information processing of amygdala during conscious and unconscious state^[41-46].

Amygdala is mainly responsible for the information processing of emotions (mainly negative emotions, such as fear), especially emotional processing under consciousness^[4, 47-54]. The amygdala mainly receive information from two brain regions: one is from the sensory cortex, and the other is from subcortical nuclei^[49]. It is generally believed that the amygdala can quickly process some danger information in the environment^[9, 55], for example, amygdala responds to visual signals from complex objects within 60 ms in monkey^[55].

During early perception, the amygdala receives emotion-related information and projects this processed information to the sensory cortex to further regulate attention and perception. Some studies have found that the visual cortex is activated when new emotional stimuli are presented. This excitation is related to the activation of the amygdala. There is a high correlation between the visual cortex and amygdala. Clinical studies have found that this phenomenon disappears in patients with amygdala damage^[52].

Subcortical pathways have been extensively studied in humans and some animals^[8, 56-61]. In one study, magnetic resonance imaging (MRI) was used to

track the direction of white matter fibers in the brain of patients with cortical impairment, and it was found that the number of nerve fibers in the subcortical pathway increased, and the three nuclei formed a loop structure^[56]. This is strong evidence for the existence of subcortical pathways. Many brain imaging and clinical studies have also confirmed that subcortical pathway plays an important role in the rapid processing of consciously and unconsciously visual information^[62-64]. One of the features of this pathway is that it can process non-fine visual information under consciousness, whereas the fine visual information processing relies on classical cortical visual pathways^[65]. Studies have shown that, in most cases, the amygdala rapidly analyzes incoming information to see if there are risk factors in the external environment that require a rapid behavioral response^[51, 53, 64, 66-71]. It is important for survival. Many emotion-related visual studies, especially the studies of brain response to fearful faces, also suggest that this subcortical pathway mainly processes emotion-related visual information, such as facial expression^[3, 56, 72-76]. Garvert *et al.*^[77] used magnetoencephalography to record the brain activity of people during rapid facial expression analysis, and the results showed that the amygdala played an important role in such analysis. In fact, such facial information processing not only occurs in the amygdala but also in the superior colliculus and the pulvinar^[78]. They found that, unlike the face neurons in the cortex, which have very fine encoding for facial features, the superior colliculus and the pulvinar have no extensive encoding for face details. In primates, facial expressions are important for survival, and recent research suggests that fetuses develop a preference for face-like shapes early in life. Newborns can recognize faces several hours after birth^[79], at this time the primary visual cortex is far from mature and the recognition of local features of objects is still poor.

2 Topological visual perception

There is an old and unsolved question: “Where does vision begin?” Different from the traditional theory, “from the part to the whole”, the “global first” theory proposed by prof. CHEN Lin^[80] suggests that visual perception is “from the whole to the part”. Compared with the perception of other local geometric properties (projective, affine, Euclidean

geometry), the perception of topological properties is the most basic and earliest perception. Vision starts with extracting topology properties. However, there is little research on the neural pathways that regulate the topological properties of perception.

2.1 Subcortical processing of visual topological information

In 2003, Zhuo *et al.*^[80-81] suggested that in humans, the anterior temporal lobe may be the region responsible for processing visual topological information. Subsequently, some studies have shown that topological information processing may not require the primary visual cortex^[60, 82-83]. Notably, the last stop of the subcortical visual pathway, the amygdala, is located ventrally in the anterior temporal lobe. Our series of studies have shown that this subcortical visual pathway is involved in the processing of topological visual information^[80-87] and another study suggested that since the subcortical visual pathway is involved in emotion processing, fear emotion strongly interferes with topological processing but has no effect on other visual local features^[83], suggesting that emotional and topological processing share common neural circuits (Figure 2).

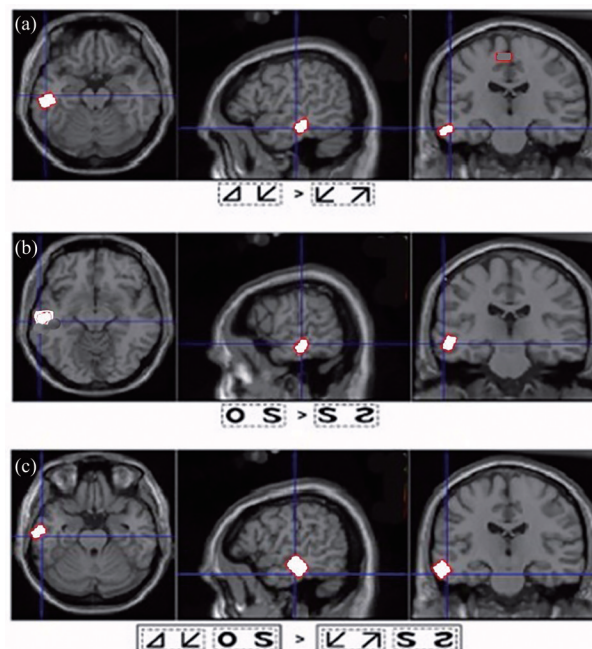


Fig. 2 Excitatory of anterior temporal lobe induced by perceptual discrimination of topological properties^[83]

fMRI activation loci in triangle-arrow pair (a) and ring-S pair (b) conditions and the condition of topological category vs. local geometric category (c), respectively.

“Hole” is an important concept in topology. In general, topological differences are most likely to occur in “hole”, such as “with or without hole”. Understanding the brain information processing of hole is very helpful for understanding the topological information processing of the brain^[81]. Studies on infants have found that infants are able to distinguish the nature of “hole” by the time they are two to three days old, their visual cortex is far from well-developed at this time^[79].

In our research, we want to know if the information processing of hole involves the primary visual cortex. To address this issue, (1) we first investigated the response speed of subjects to hole perception and found that the response speed to hole was much faster than the response speed to local features such as line segment direction. (2) With the electrophysiological ERP method, we studied the EEG characteristics induced by hole and line segment. The results showed that the N1 component of ERP induced by hole were smaller than that induced by line segment. N1 components in the primary visual

cortex are activated more by local geometric visual stimuli than by hole^[82]. (3) If the information processing of hole also involves the subcortical pathway? To address this issue, a backward masking paradigm combined with functional magnetic resonance imaging (fMRI) was applied to measure neural responses to hole and no-hole stimuli in anatomically defined cortical and subcortical regions of interest (ROIs) under different visual awareness levels by modulating masking delays. The results showed that, for no-hole stimuli, the neural activation of cortical sites was greatly attenuated when the no-hole perception was impaired by strong masking, whereas an enhanced neural response to hole stimuli in subcortical sites was obtained when the stimulus was rendered invisible. The results suggested that whereas the cortical pathway was required to drive a perceptual response for no-hole stimuli, a subcortical pathway might be involved in coding the hole feature, resulting in a rapid hole perception in primitive vision^[84] (Figure 3).

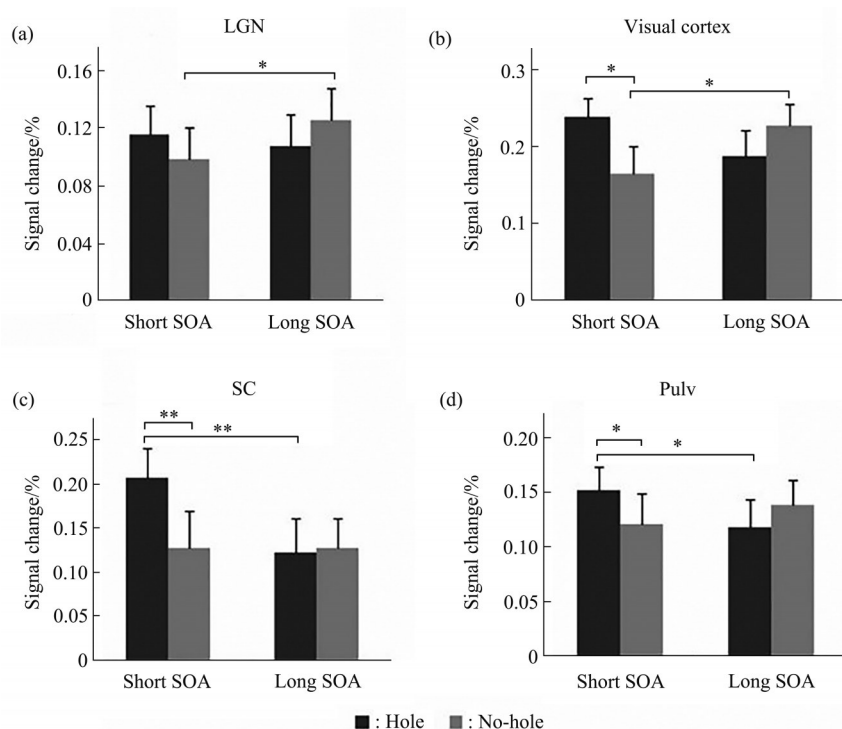


Fig. 3 The mean peak blood oxygen level-dependent (BOLD) signal intensity in LGN (a), visual cortex (b), SC (c) and pulvinar (d)^[84]

(a) LGN, (b) visual cortex, (c) SC and (d) pulvinar. Error bars represent SEM. * $P < 0.05$, ** $P < 0.01$. LGN, lateral geniculate nucleus; SC, superior colliculus; SOA, stimulus-onset asynchrony.

Also we want to know if primary visual cortex is involved in topological information processing. Visual studies have found that visual function decline in elderly people is mainly manifested by decreased visual resolution, decreased visual spatial/depth perception and decreased visual acuity^[70]. Therefore, we selected people with different ages as research subjects. The objective is to compare the differences in topological perception and other local geometric perception between the elderly and normal subjects.

In all groups, there was no difference in the average response time in the topological property discrimination task. However, there was a significant difference in the response time of the local geometric property discrimination task in the group of subjects aged over 70 years. This result supports the hypothesis that functional degradation of the visual cortex does not affect topological perception but affects local geometric perception. With the functional degradation of the visual cortex, the perception of topological properties in elderly people were not affected, indicating that topological perception does not require the involvement of the primary visual cortex^[85].

To directly verify whether the primary visual cortex participates in the processing of visual topological information, we inhibited the function of the primary visual cortex to determine whether it has the same effect on topological information and non-topological information processing. In this experiment, we used transcranial magnetic stimulation (TMS) to inhibit the primary visual cortex. The results show that non-hole perception was impaired, but not hole perception, strongly suggesting that information processing of hole is independent of the primary visual cortex^[86].

2.2 The brain still has advantages in unconscious topological information processing

Previous studies have demonstrated that hole features have an advantage over non-hole features in conscious states. However, does the brain still have an advantage in unconsciously processing visual information? The binocular competition paradigm has become a common approach in consciousness research in recent years^[45]. We used this paradigm to study this problem. Our results show that hole stimulation also has advantages over non-hole stimulation in unconsciously processing visual

information. These results suggest that hole features can be processed unconsciously and that hole are more likely to break through the inhibition induced by binocular competition and enter consciousness than non-holes^[87].

The above experiments consistently prove that the perception of topological properties is not carried out through classical visual pathways.

This evidence clearly indicates that local feature perception and topological feature perception are separated in the brain. Therefore, we believe that the functions of subcortical pathways are not limited to emotion-related visual information processing but have many more functions, such as early and rapid processing of the overall nature of visual information.

3 Topological perception and subcortical pathway may be the neural basis of early warning

As mentioned above, subcortical pathway process both fear emotion, and topological information. Can we have a unified explanation about this? For this problem, our explanation is as following:

(1) Topology change and warning

We know that the vision in non-primate mammals is underdeveloped^[75]. Most non-primate mammals do not have full trichromatic vision and are even color blind. In addition, the retina of non-primate mammals lacks a macula and has more rods and fewer cones than the retina of primates^[88-91]. Thus, in addition to lacking complete color vision, these mammals also lack fine vision. Non-primate mammals receive olfactory, auditory and visual information from the outside world. For the warning response of external risk factors, the most effective information should be visual information, however, without color vision and fine vision, the external world in their eyes is very dim. This raises a question, what is the warning information extracted by the visual system?

In topological mathematics, the calculated objects have no concept of size, length and shapes. In fact, topology studies the invariance and continuity of objects in the process of spatiotemporal change. When the eyes detect an object appears or disappears in the background, the environment will undergo topological changes according to the definition of topology. In the actual situation, a change in the environment may

mean danger coming. Therefore, the ability to visually detect topological transformation is an innate defense and self-protection ability of animals. In non-primate mammals, although they cannot detect the shape, texture and other geometric features of objects, but their vision is competent for topological information processing. Newborns are sensitive to the topological changes, it is a defensive mechanism. Subcortical pathways in mammals may be responsible for this early warning function.

(2) Hole and face perception

Our study suggests that primates, possibly all mammals, have an innate discrimination advantage for hole. We consider that this advantage may be related to fear. From the perspective of the evolution of the visual pathway, the eye of non-primate mammalian has no cortical visual pathway, lacks fine vision and color vision, so it does not fit to see the landscape, but fits to detect changes in the environment, these changes may bring death to the animal.

In order to avoid danger, species have developed a set of defense mechanisms in evolution. One of these mechanisms is the establishment of fear which produces fear emotional response. Many of us have an inexplicable fear of holes. Why do we have such a fear? Several year ago, we have speculated that in a living environment, a hole, like a cave, might harbor a deadly killer, so animals are instinctively wary of holes and caves^[92]. However, after our further analysis later, we believe that the sensitivity to holes is more likely to be the sensitivity to faces. Our face is made up of 7 holes, and the 3 holes, the eyes and mouth are the most distinctive features of the face. Of the 3 holes, the eye is the most sensitive.

When tigers are hunting, they always attack from behind of prey rather than from front of prey. Bengal tigers are often seen in the mountains of Southeast Asia. In order to prevent the tigers from attacking people from behind, local people always put a picture of a human face on their backs.

So how does an animal know if it's face to face with an opponent? Obviously, by looking at the opponent's face, if the eyes and mouth can be seen, it means face to face and danger, it should immediately adjust the strategy to avoid danger and damage. When fighting face to face, animals always open their eyes and mouths wide to show the "holes" in their faces and intimidate each other. Almost all mammals fear

eye-to-eye contact. When someone stares into another one's eyes, it often causes alarm in this one being stared at.

In addition to the eyes, the animal's mouth is also an important organ to convey information. When an animal sees a hole, it may mean a killer with a gaping mouth coming towards it. Usually to display power, animals are often open "big mouth" to give a warning to the opponent.

As mentioned above, newborns can distinguish faces and holes/non-holes clearly, in this time, their vision is still very blurred, and a study has reported that human fetuses show a preference for face-like shapes. Evolutionary principles suggest that these first developed functions must be relevant for individual survival.

In summary, in the early stage of vision, the brain detects signals that involve life or safety, which warns the brain that something appears and puts the brain into a state of alert that is essential to the survival of the species. Therefore, in the early stage of vision, the objects that need to be detected are only "appearance" and "disappearance", rather than "texture", "shape", *etc.* Both "appearance" and "disappearance" are changes in topological features. The existence of topological perception and subcortical pathways may be the neural basis of early warning. "Early warning" may be one of the biological mechanisms of the existence of subcortical pathways.

4 The eye of primates is a Mosaic of an older visual system and a younger one

When talking about the evolution of the nervous system, it is generally believe that as the cerebral cortex develops, the visual function of the midbrain was replaced by the function of cerebral visual cortex. The visual function of the midbrain became less important. However, from the above analysis, we can see that the subcortical visual pathway is very important for the survival of individuals, and its warning function enables individual to avoid risks. However, this important function does not exist in the cerebral visual cortex. We often say that in primates, the eye is a perfect structure, and not just because we have perfect fine and color vision, both of which are done by cortical visual pathways. But we may not notice that the peripheral area of retina is distributed

mainly with rod cells, the visual information processing in this area is mainly processed by subcortical visual pathway, this type of retinal structure existed more than one hundred million years ago. The area close to the center of the retina is the macular, the visual information processing in this area is mainly processed by visual cortex, cone cell density increased greatly, the visual spatial resolution becomes very high. This structure appeared only 50 million years ago, so our eyes span at least 50 million years from the peripheral region to the central region, it is a Mosaic of an older structure and a younger one, and their coexistence gives us perfect vision. When we consider the significance of the existence of subcortical pathway, we should also consider the function of cortical pathways.

Even though we have the above findings, we do believe that we are still very shallow understanding of subcortical pathways. Besides the functions we mentioned above, are there more functions than those mentioned above? For example, some studies have found that many diseases, such as epilepsy, chronic pain, depression, autism are related to the amygdala^[93-94], we do not know the relationship between these diseases and the amygdala function. Is there a unified mechanism behind these phenomena and are the functions discussed above are only sub-function? This is also something we need to further study.

References

- [1] Weiskrantz L. Blindsight: a Case Study and Implications. New York: Oxford University Press, 1990
- [2] Morris J S, Degelder B, Weiskrantz L, *et al.* Differential extrageniculostriate and amygdala responses to presentation of emotional faces in a cortically blind field. *Brain*, 2001, **124**(Pt 6): 1241-1252
- [3] Morris J S, Friston K J, Büchel C, *et al.* A neuromodulatory role for the human amygdala in processing emotional facial expressions. *Brain*, 1998, **121** (Pt 1): 47-57
- [4] Pasley B N, Mayes L C, Schultz R T. Subcortical discrimination of unperceived objects during binocular rivalry. *Neuron*, 2004, **42**(1): 163-172
- [5] Morris J S, Ohman A, Dolan R J. Conscious and unconscious emotional learning in the human amygdala. *Nature*, 1998, **393**(8884): 467-470
- [6] Dalgleish T. The emotional brain. *Nat Rev Neurosci*, 2004, **5**(7): 583-589
- [7] Garrido M I. Brain connectivity: the feel of blindsight. *Curr Biol*, 2012, **22**(15): R599-R600
- [8] Liddell B J, Brown K J, Kemp A H, *et al.* A direct brainstem-amygdala-cortical “alarm” system for subliminal signals of fear. *Neuroimage*, 2005, **24**(1): 235-243
- [9] Williams L M, Das P, Liddell B J, *et al.* Mode of functional connectivity in amygdala pathways dissociates level of awareness for signals of fear. *J Neurosci*, 2006, **26**(36): 9264-9271
- [10] De Gelder B, Hadjikhani N. Non-conscious recognition of emotional body language. *Neuroreport*, 2006, **17**(6): 583-586
- [11] De Gelder B, Morris J S, Dolan R J. Unconscious fear influences emotional awareness of faces and voices. *Proc Natl Acad Sci USA*, 2005, **102**(51): 18682-18687
- [12] Basso M A, May P J. Circuits for action and cognition: a view from the superior colliculus. *Annu Rev Vis Sci*, 2017, **3**(1): 197-226
- [13] Dilbeck M D, Spahr Z R, Nanjappa R, *et al.* Columnar and laminar segregation of retinal input to the primate superior colliculus revealed by anterograde tracer injection into each eye. *Invest Ophthalmol Vis Sci*, 2022, **63**(1): 9
- [14] García-Gomar M G, Strong C, Toschi N, *et al.* *In vivo* probabilistic structural atlas of the inferior and superior colliculi, medial and lateral geniculate nuclei and superior olivary complex in humans based on 7 Tesla MRI. *Front Neurosci*, 2019, **13**(1): 764
- [15] Ito S, Feldheim D A. The mouse superior colliculus: an emerging model for studying circuit formation and function. *Front Neural Circuits*, 2018, **12**(1): 10
- [16] Mellott J G, Beebe N L, Schofield B. GABAergic and non-GABAergic projections to the superior colliculus from the auditory brainstem. *Brain Struct Funct*, 2018, **223**(4): 1923-1936
- [17] Wang Y C, Bianciardi M, Chan L, *et al.* Ultra high field fMRI of human superior colliculi activity during affective visual processing. *Sci Rep*, 2020, **10**(1): 1331
- [18] Wei P, Liu N, Zhang Z, *et al.* Processing of visually evoked innate fear by a non-canonical thalamic pathway. *Nat Commun*, 2015, **6**(1): 6756
- [19] Jones E G, Burton H. A projection from the medial pulvinar to the amygdala in primates. *Brain Res*, 1976, **104**(1): 142-147
- [20] Romanski L M, Giguere M, Bates J F, *et al.* Topographic organization of medial pulvinar connections with the prefrontal cortex in the rhesus monkey. *J Comp Neurol*, 1997, **379**(3): 313-332
- [21] Shipp S. The functional logic of cortico-pulvinar connections. *Philos Trans R Soc Lond B Biol Sci*, 2003, **358**(1438): 1605-1624
- [22] Arcaro M J, Pinsk M A, Kastner S. The anatomical and functional organization of the human visual pulvinar. *J Neurosci* 2015, **35**(27): 9848-9871
- [23] Cortes N, Abbas Farishta R, Ladret H J, *et al.* Corticothalamic projections gate alpha rhythms in the pulvinar. *Front Cell Neurosci*, 2021, **15**(1): 787170
- [24] Jaramillo J, Mejias J F, Wang X J. Engagement of pulvino-cortical feedforward and feedback pathways in cognitive computations. *Neuron*, 2019, **101**(2): 321-336
- [25] Koizumi A, Zhan M, Ban H, *et al.* Threat anticipation in pulvinar and in superficial layers of primary visual cortex (V1). Evidence

- from layer-specific ultra-high field 7T fMRI. *eNeuro*, 2019, **6**(6): ENEURO.0429-0419
- [26] Mcfadyen J, Mattingley J, Garrido M. An afferent white matter pathway from the pulvinar to the amygdala facilitates fear recognition. *Elife*, 2019, **8**(1): e40766
- [27] Moore B, Li K, Kaas J, *et al.* Cortical projections to the two retinotopic maps of primate pulvinar are distinct. *J Comp Neurol*, 2019, **527**(3): 577-588
- [28] Takakuwa N, Isa K, Onoe H, *et al.* Contribution of the pulvinar and lateral geniculate nucleus to the control of visually guided saccades in blindsight monkeys. *J Neurosci*, 2021, **41**(8): 1755-1768
- [29] Aerts T, Seuntjens E. Novel perspectives on the development of the amygdala in rodents. *Front Neuroanat*, 2021, **15**:786679
- [30] Elorette C, Forcelli P A, Saunders R C, *et al.* Colocalization of tectal inputs with amygdala-projecting neurons in the macaque pulvinar. *Front Neural Circuits*, 2018, **12**:91
- [31] Reding K X, Grayson D S, Miranda-Dominguez O, *et al.* Effects of social subordination and oestradiol on resting-state amygdala functional connectivity in adult female rhesus monkeys. *J Neuroendocrinol*, 2020, **32**(2): e12822
- [32] Rutishauser U, Mamelak A N, Adolphs R. The primate amygdala in social perception-insights from electrophysiological recordings and stimulation. *Trends Neurosci*, 2015, **38**(5): 295-306
- [33] Goetschius L G, Hein T C, Mattson W I, *et al.* Amygdala-prefrontal cortex white matter tracts are widespread, variable and implicated in amygdala modulation in adolescents. *Neuroimage*, 2019, **191**: 278-291
- [34] Schumann C, Scott J A, Lee A, *et al.* Amygdala growth from youth to adulthood in the macaque monkey. *J Comp Neurol*, 2019, **527**(18): 3034-3045
- [35] Thomas E, Buss C, Rasmussen J M, *et al.* Newborn amygdala connectivity and early emerging fear. *Dev Cogn Neurosci*, 2019, **37**: 100604
- [36] Hofmann D X, Straube T. Resting-state fMRI effective connectivity between the bed nucleus of the stria terminalis and amygdala nuclei. *Hum Brain Mapp*, 2019, **40**(9): 2723-2735
- [37] Kim W, Cho J. Synaptic targeting of double-projecting ventral CA1 hippocampal neurons to the medial prefrontal cortex and basal amygdala. *J Neurosci*, 2017, **37**(19): 4868-4882
- [38] Mhuirheartaigh R N, Rosenorn-Lanng D, Wise R, *et al.* Cortical and subcortical connectivity changes during decreasing levels of consciousness in humans: a functional magnetic resonance imaging study using propofol. *J Neurosci*, 2010, **30**(27): 9095-9102
- [39] Hennessey T, Andari E, Rainnie D G. RDoC-based categorization of amygdala functions and its implications in autism. *Neurosci Biobehav Rev*, 2018, **90**(1): 115-129
- [40] Šimić G, Tkalčić M, Vukić V, *et al.* Understanding emotions: origins and roles of the amygdala. *Biomolecules*, 2021, **11**(6):823
- [41] Atilgan N, Yu S M, He S. Visual crowding effect in the parvocellular and magnocellular visual pathways. *J Vis*, 2020, **20**(8):6
- [42] Dai R, Huang Z, Tu H, *et al.* Interplay between heightened temporal variability of spontaneous brain activity and task-evoked hyperactivation in the blind. *Front Hum Neurosci*, 2016, **10**(1): 632
- [43] Ge Y, Sun Z, Qian C, *et al.* Spatiotopic updating across saccades in the absence of awareness. *J Vis*, 2021, **21**(5): 7
- [44] Hadid V, Lepore F. From cortical blindness to conscious visual perception: theories on neuronal networks and visual training strategies. *Front Syst Neurosci*, 2017, **11**: 64
- [45] Lin Z, He S. Seeing the invisible: the scope and limits of unconscious processing in binocular rivalry. *Prog Neurobiol*, 2009, **87**(4): 195-211
- [46] Sattin D, Magnani F G, Bartesaghi L, *et al.* Theoretical models of consciousness: a scoping review. *Brain Sci*, 2021, **11**(5): 535
- [47] Critchley H D, Mathias C J, Dolan R J. Fear conditioning in humans: the influence of awareness and autonomic arousal on functional neuroanatomy. *Neuron*, 2002, **33**(4): 653-663
- [48] Juruena M F, Giampietro V P, Smith S D, *et al.* Amygdala activation to masked happy facial expressions. *J Int Neuropsychol Soc*, 2010, **16**(2): 383-387
- [49] Phelps E A, Ledoux J E. Contributions of the amygdala to emotion processing: from animal models to human behavior. *Neuron*, 2005, **48**(2): 175-187
- [50] Whalen P J, Kagan J, Cook R G, *et al.* Human amygdala responsivity to masked fearful eye whites. *Science*, 2004, **306**(5704): 2061
- [51] Spence S. Descartes' error: emotion, reason and the human brain. *BMJ*, 1995, **310**(6988): 1206-1213
- [52] Edmiston E K, Mchugo M, Dukic M S, *et al.* Enhanced visual cortical activation for emotional stimuli is preserved in patients with unilateral amygdala resection. *J Neurosci*, 2013, **33**(27): 11023-11031
- [53] Scherer K R. Criteria for emotion-antecedent appraisal: a review// Hamilton V, Bower G H, Frijda N H. *Cognitive Perspectives on Emotion and Motivation*. Netherlands: Springer, 1988: 89-126
- [54] Manstead A, Frijda N, Fischer A. Feelings integrate the central representation of appraisal-driven response organization in emotion//Manstead A S R, Frijda N, Fischer A. *Feelings and Emotions (The Amsterdam Symposium)*. Cambridge: Cambridge University Press, 2004: 136-157
- [55] Krolak-Salmon P, Hénaff M A, Vighetto A, *et al.* Early amygdala reaction to fear spreading in occipital, temporal, and frontal cortex: a depth electrode ERP study in human. *Neuron*, 2004, **42**(4): 665-676
- [56] Tamietto M, De Gelder B. Neural bases of the non-conscious perception of emotional signals. *Nat Rev Neurosci*, 2010, **11**(10): 697-709
- [57] Harting J K, Huerta M F, Hashikawa T, *et al.* Projection of the mammalian superior colliculus upon the dorsal lateral geniculate nucleus: organization of tectogeniculate pathways in nineteen species. *J Comp Neurol*, 1991, **304**(2): 275-306
- [58] Linke R, De Lima A D, Schwegler H, *et al.* Direct synaptic

- connections of axons from superior colliculus with identified thalamo-amygdaloid projection neurons in the rat: possible substrates of a subcortical visual pathway to the amygdala. *J Comp Neurol*, 1999, **403**(2): 158-170
- [59] Ward R, Danziger S, Bamford S. Response to visual threat following damage to the pulvinar. *Curr Biol*, 2005, **15**(6): 571-573
- [60] Lyon D C, Nassi J J, Callaway E M. A disynaptic relay from superior colliculus to dorsal stream visual cortex in macaque monkey. *Neuron*, 2010, **65**(2): 270-279
- [61] Vingerhoets G. Extended abstracts from the Second Meeting of the Federation of European Societies of Neuropsychology. *Behav Neurol*, 2010, **23**(4): 161
- [62] Grieve K L, Acuña C, Cudeiro J. The primate pulvinar nuclei: vision and action. *Trends Neurosci*, 2000, **23**(1): 35-39
- [63] Gläscher J, Adolphs R. Processing of the arousal of subliminal and supraliminal emotional stimuli by the human amygdala. *J Neurosci*, 2003, **23**(32): 10274-10282
- [64] Pessoa L, Adolphs R. Emotion processing and the amygdala: from a 'low road' to 'many roads' of evaluating biological significance. *Nat Rev Neurosci*, 2010, **11**(11): 773-783
- [65] Ungerleider L G, Haxby J V. 'What' and 'where' in the human brain. *Curr Opin Neurobiol*, 1994, **4**(2): 157-165
- [66] Arnold M B. Emotion, motivation, and the limbic system. *Ann New York Acad Sci*, 1969, **159**(3): 1041-1058
- [67] Aue T, Hoeppli M E, Piguet C, *et al*. Visual avoidance in phobia: particularities in neural activity, autonomic responding, and cognitive risk evaluations. *Front Hum Neurosci*, 2013, **7**(1): 194
- [68] Lazarus R S. Psychological stress and the coping process. *Am J Psycho*, 1966, **83**(4): 426-453
- [69] Lazarus R S. Cognition and motivation in emotion. *Am Psycho*, 1991, **46**(4): 352-367
- [70] Leventhal A G, Wang Y, Pu M, *et al*. GABA and its agonists improved visual cortical function in senescent monkeys. *Science*, 2003, **300**(5620): 812-815
- [71] Rolls E. The cingulate cortex and limbic systems for emotion, action, and memory. *Brain Struct Funct*, 2019, **224**(9): 3001-3018
- [72] Bechara A, Tranel D, Damasio H, *et al*. Double dissociation of conditioning and declarative knowledge relative to the amygdala and hippocampus in humans. *Science*, 1995, **269**(5227): 1115-1118
- [73] Rinn W E. The neuropsychology of facial expression: a review of the neurological and psychological mechanisms for producing facial expressions. *Psycho Bull*, 1984, **95**(1): 52-77
- [74] Johnson M H. Subcortical face processing. *Nat Rev Neurosci*, 2005, **6**(10): 766-774
- [75] Sagan C. *The Dragons of Eden: Speculations on the Evolution of Human Intelligence*. New York: Randomhouse, 1977
- [76] Ekman P. Biological and cultural contributions to body and facial movements//Blacking J. *Anthropology of the Body*. London: Academic Press, 1977: 10-27
- [77] Garvert M M, Friston K J, Dolan R J, *et al*. Subcortical amygdala pathways enable rapid face processing. *Neuroimage*, 2014, **102**(Pt2): 309-316
- [78] Nguyen M N, Nishimaru H, Matsumoto J, *et al*. Population coding of facial information in the monkey superior colliculus and pulvinar. *Front Neurosci*, 2016, **10**(1): 583
- [79] Turati C, Simion F, Zanon L. Newborns' perceptual categorization for closed and open geometric forms. *Infancy*, 2003, **4**(3): 309-325
- [80] Chen L. The topological approach to perceptual organization. *Vis Cogn*, 2005, **12**(1): 4
- [81] Zhuo Y, Zhou T G, Rao H Y, *et al*. Contributions of the visual ventral pathway to long-range apparent motion. *Science*, 2003, **299**(5605): 417-420
- [82] Zhang J, Zhu W, Ding X, *et al*. Different masking effects on "hole" and "no-hole" figures. *J Vis*, 2009, **9**(9): 6, 1-14
- [83] Wang B, Zhou T G, Zhuo Y, *et al*. Global topological dominance in the left hemisphere. *Proc Natl Acad Sci USA*, 2007, **104**(52): 21014-21019
- [84] Meng Q, Huang Y, Cui D, *et al*. The dissociations of visual processing of "hole" and "no-hole" stimuli: an functional magnetic resonance imaging study. *Brain Behav*, 2018, **8**(5): e00979
- [85] Meng Q, Wang B, Cui D, *et al*. Age-related changes in local and global visual perception. *J Vis*, 2019, **19**(1): 10
- [86] Du X, Zhou K, Chen L. Different temporal dynamics of topological and projective geometrical perceptions in primary visual cortex: a TMS study. *J Vis*, 2011, **11**(11): 863
- [87] Meng Q, Cui D, Zhou K, *et al*. Advantage of hole stimulus in rivalry competition. *PLoS One*, 2012, **7**(3): e33053
- [88] Hamon A, Roger J E, Yang X J, *et al*. Müller glial cell-dependent regeneration of the neural retina: an overview across vertebrate model systems. *Dev Dyn*, 2016, **245**(7): 727-738
- [89] Kim Y, Peterson B B, Crook J D, *et al*. Origins of direction selectivity in the primate retina. *Nat Commun*, 2022, **13**(1): 2682
- [90] Linsenmeier R A, Zhang H F. Retinal oxygen: from animals to humans. *Prog Retinal Eye Res*, 2017, **58**: 115-151
- [91] Wallace B T, Dennis M, Dacey D. Cell types, circuits, and mechanisms for color vision in the vertebrate retina. *Physiol Rev*. 2019, **99**(3): 1527-1573
- [92] Wang L, Yang L, Meng Q, *et al*. Superior-pulvinar-amygdala subcortical visual pathway and its biological significance. *Acta Physiol Sin*, 2018, **70**(1): 79-84
- [93] Qi R, Wang M, Zhong Q, *et al*. Chronic vagus nerve stimulation (VNS) altered IL-6, IL-1 β , CXCL-1 and IL-13 levels in the hippocampus of rats with LiCl-pilocarpine-induced epilepsy. *Brain Res*, 2022, **1780**(1): 147800
- [94] Johnson R L, Wilson C G. A review of vagus nerve stimulation as a therapeutic intervention. *J Inflamm Res*, 2018, **11**(1): 203-213

视觉皮层下通路 & 拓扑知觉*

余肇乾^{1,2)} 赵旭东³⁾ 杨丽川²⁾ 孟千力^{3,4)**} 戚仁莉^{1)**}

⁽¹⁾ 昆明医科大学第一附属医院, 昆明 650032;

⁽²⁾ 昆明医科大学研究生院, 昆明 650500;

⁽³⁾ 中国科学院生物物理研究所, 脑与认知国家重点实验室, 北京 100101;

⁽⁴⁾ *Department of Psychological and Brain Sciences, University of Delaware, Delaware 19701, USA*

摘要 研究表明, 视觉通路除了经典的视觉皮层通路外, 还有一条“古老的”、快速的皮层下通路负责在有意识和无意识状态下快速处理与情绪相关的信息。皮层下视觉通路由上丘、枕核和杏仁核组成, 而且不经过初级视觉皮层。我们前期研究表明, 初级视觉皮层与拓扑知觉信息加工没有关系, 而皮层下视觉通路负责处理视觉拓扑信息。基于这些发现, 我们认为, 在早期视觉中, 大脑检测涉及生命攸关的信号, 这些信号告诉大脑: 环境中物体出现或消失, 使大脑进入警戒状态, 这对物种的生存至关重要。因此, 在早期视觉中, 需要检测的要素只是物体的“出现”和“消失”, 而不是“纹理”、“形状”等。“出现”和“消失”都是拓扑特征的变化。拓扑感知和皮层下视觉通路的存在可能是早期预警的神经基础。在灵长类动物中, 视网膜外周区域主要由视杆细胞构成, 该区域接收的视觉信息主要通过皮层下视觉通路进行处理; 视网膜中心区域(即中央凹)主要由视锥细胞构成, 视觉空间分辨率变得非常高, 该区域视觉信息处理主要是由视觉皮层负责。研究表明, 由视杆细胞构成的视网膜是个“古老”结构, 在1亿多年前就出现了; 而视锥细胞构成的视网膜类型较为“年轻”, 在5000万年前才出现。所以, 我们的视网膜从“古老”结构演化到“年轻”结构至少用了5000万年的时间, 它是由一个古老结构和一个年轻结构共同组成的“嵌合体”。当我们讨论皮层下通路存在的意义时, 我们也应该结合皮层通路的功能来统一考虑。

关键词 视觉皮层下通路, 拓扑知觉, 视觉信息处理, 大脑皮层, 演化

中图分类号 B845, Q42

DOI: 10.16476/j.pibb.2022.0123

* 云南省自然科学基金(202105AC160029, KYRLMY20200026, 202002AA100204)资助项目。

** 通讯联系人。

戚仁莉 Tel: 15969569740, E-mail: qiqi947@mail.ustc.edu.cn

孟千力 Tel: 13022685238, E-mail: qlmeng@udel.edu

收稿日期: 2022-03-30, 接受日期: 2022-09-20